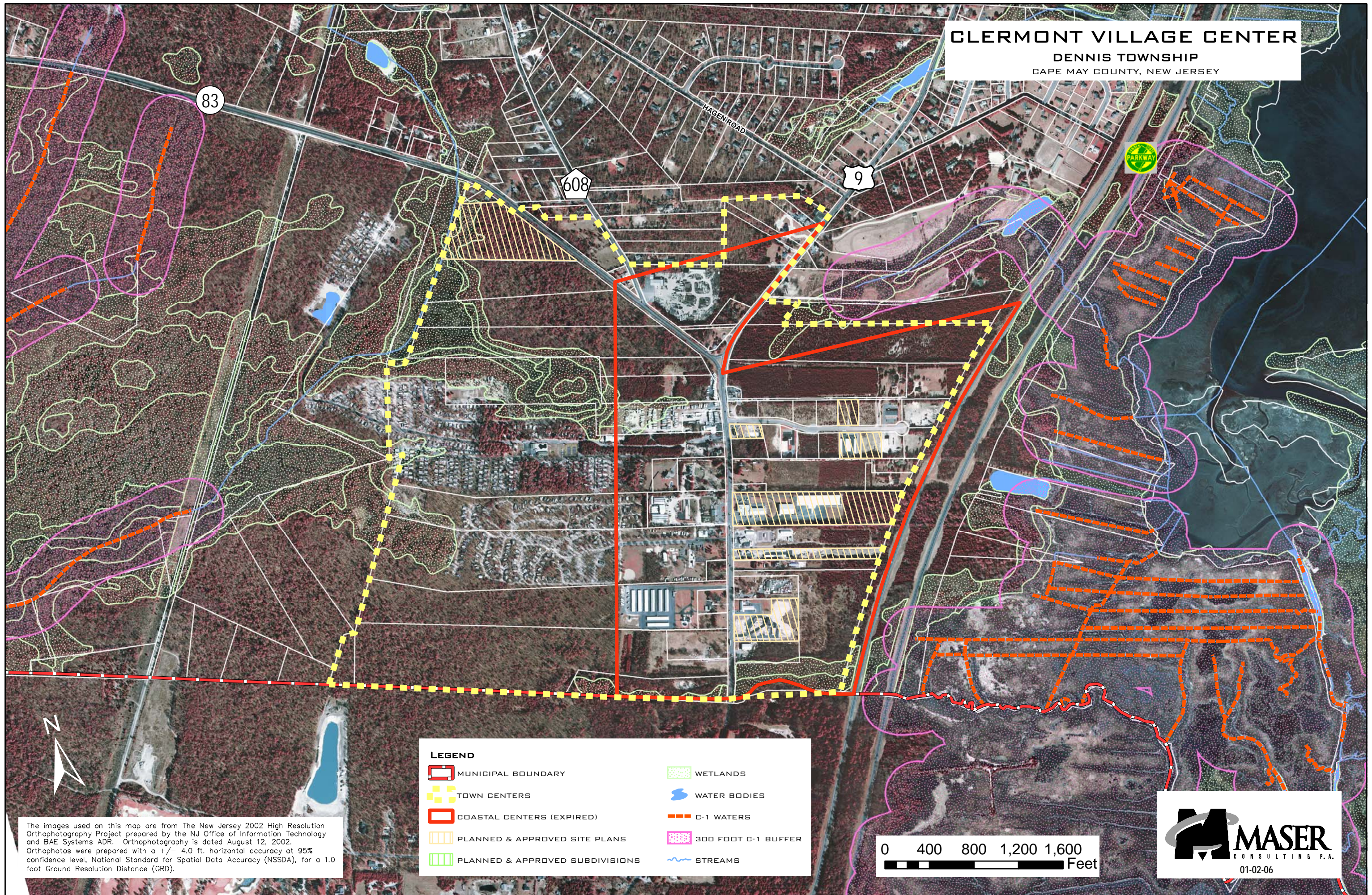












# CLERMONT VILLAGE CENTER

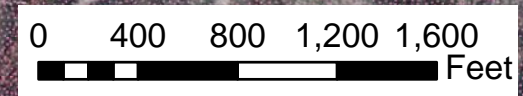
DENNIS TOWNSHIP  
CAPE MAY COUNTY, NEW JERSEY



The images used on this map are from The New Jersey 2002 High Resolution Orthophotography Project prepared by the NJ Office of Information Technology and BAE Systems ADR. Orthophotography is dated August 12, 2002. Orthophotos were prepared with a +/- 4.0 ft. horizontal accuracy at 95% confidence level, National Standard for Spatial Data Accuracy (NSSDA), for a 1.0 foot Ground Resolution Distance (GRD).

**LEGEND**

 MUNICIPAL BOUNDARY	 WETLANDS
 TOWN CENTERS	 WATER BODIES
 COASTAL CENTERS (EXPIRED)	 C-1 WATERS
 PLANNED & APPROVED SITE PLANS	 300 FOOT C-1 BUFFER
 PLANNED & APPROVED SUBDIVISIONS	 STREAMS




01-02-06