

Community Forestry Management Plan  
2009 – 2014  
Updated for 2015-2019  
Township of Dennis  
Environmental Commission

Originally Prepared by:  
Arbor Care Resources  
Mays Landing, NJ  
M.F. Mickey Riggan – Arborist  
NJCTE #366

Substantially Revised and Reformatted  
Dennis Township Environmental Commission, CFMP Subcommittee  
October 2014/December 2015

<b>MUNICIPAL INFORMATION FORM .....</b>	<b>4</b>
<b>INTRODUCTION .....</b>	<b>5</b>
<b>MISSION STATEMENT .....</b>	<b>5</b>
<b>PROGRAM GOALS AND OBJECTIVES .....</b>	<b>5</b>
<b>COMMUNITY OVERVIEW.....</b>	<b>6</b>
HISTORY OF THE TOWNSHIP OF DENNIS’S ENVIRONMENTAL MANAGEMENT RELATED TO ITS TREES.....	7
TOWNSHIP OF DENNIS’S ENVIRONMENTAL MANAGEMENT PROGRAM TODAY REGARDING TREES.....	8
THE COMMUNITY’S ACHIEVEMENTS IN DEVELOPING AND NURTURING TREES IN THE COMMUNITY.....	9
PROBLEMS ENCOUNTERED AND NEW ISSUES THAT DEVELOPED AND HOW THEY WERE HANDLED.....	9
THE FUTURE OF THE TOWNSHIP’S ENVIRONMENTAL MANAGEMENT PLAN .....	9
DENNIS MUNICIPAL MASTER PLAN, OPEN SPACE PLAN, AND WATERSHED PLAN .....	9
AMENDMENTS TO THIS COMMUNITY FORESTRY MANAGEMENT PLAN .....	9
COMMUNITY FORESTRY PROGRAM ADMINISTRATION .....	9
CURRENT ENVIRONMENTAL COMMISSION MEMBERS.....	10
RESPONSIBILITIES OF THE ENVIRONMENTAL COMMISSION .....	10
RESPONSIBILITIES OF THE MAYOR AND COMMITTEE .....	11
<b>TREE RELATED ORDINANCES .....</b>	<b>10</b>
<b>ORGANIZATIONAL CHART.....</b>	<b>11</b>
<b>RESPONDING TO TREE SERVICE REQUESTS.....</b>	<b>11</b>
<b>CONTRACTING TREE SERVICE COMPANIES.....</b>	<b>11</b>
<b>TRAINING AND DEVELOPMENT.....</b>	<b>12</b>
CURRENT TRAINING NEEDS .....	12
EXISTING PROGRAMS, POLICIES & PROCEDURES .....	13
2015–2019 OBJECTIVES .....	13
TRAINING SOURCES.....	13
OUTSIDE CONTRACTORS & PUBLIC UTILITIES .....	14
<b>PUBLIC EDUCATION OUTREACH AND AWARENESS.....</b>	<b>14</b>
EXISTING PROGRAMS, POLICIES & PROCEDURES .....	14
2015–2019 GOALS .....	14
2015-2019 OBJECTIVES PRESENTATIONS .....	15
COMMUNITY BASED PLANTING PROGRAMS .....	16
DEVELOPING INFORMATION AND RESOURCES.....	16
<b>STATEMENT OF THE TREE BUDGET .....</b>	<b>17</b>
FUNDING SOURCES .....	17
BUDGET 2015 .....	19
<b>PLAN IMPLEMENTATION.....</b>	<b>19</b>
<b>TREE INVENTORY PLAN.....</b>	<b>21</b>
GOALS .....	21
OBJECTIVES.....	22
<b>TREE HAZARD IDENTIFICATION AND RISK MANAGEMENT.....</b>	<b>23</b>

SCOPE.....	23
EXISTING PROGRAMS, POLICIES & PROCEDURES .....	23
GOALS .....	23
METHOD USED FOR HAZARD EVALUATION.....	24
OBJECTIVES.....	25
<b>TREE MAINTENANCE.....</b>	<b>26</b>
GOALS .....	26
OBJECTIVES 2015-2019.....	26
<b>TREE PLANTING IMPLEMENTATION PLAN .....</b>	<b>27</b>
OBJECTIVES 2009-2015.....	27
<b>TREE ORDINANCE ESTABLISHMENT .....</b>	<b>28</b>
GOALS .....	29
EXISTING PROGRAMS, POLICIES & PROCEDURES .....	29
OBJECTIVES    JANUARY 2015-DECEMBER 2019 .....	29
<b>TREE LEAF RECYCLING .....</b>	<b>30</b>
PROGRAMS, POLICIES & PROCEDURES .....	30
<b>INTEGRATED PEST MANAGEMENT.....</b>	<b>30</b>
EXISTING PROGRAMS, POLICIES & PROCEDURES.....	30
OBJECTIVES    JANUARY 2015-DECEMBER 2019.....	30
GOALS .....	31
OBJECTIVES 2015-2019 .....	31
<b>COMMUNITY STEWARDSHIP INCENTIVE PROGRAM INDEX.....</b>	<b>31</b>



# Introduction

The Township of Dennis and the Environmental Commission have developed this Community Forestry Management Plan for the purpose of improving and maintaining the community forest at the highest level possible.

1. The implementation of the goals and objectives described within this plan are either the individual responsibility or the joint responsibility of the following Township entities: Environmental Commission, Council, Land Use Board, and Public Works and Parks Departments.
2. This plan outlines the responsibilities of the Township entities that will be responsible for overseeing or implementing the specific goals and objectives within this plan.
3. The implementation of the plan will provide a framework for the development and oversight of the community forest in Dennis Township and will increase the community's understanding of the urban forest. IN addition, this plan will increase the public's appreciation of trees on public and private lands for the benefit of the entire community.
4. This plan will define the community forest and map areas of responsibility.

# Mission Statement

- The mission of the Township of Dennis, in regard to the community forest is:
- For the Township to provide a resource to the community for all tree related issues;
- To maintain and expand a tree canopy throughout the Township which is safe, appreciated, and protected, and adds to the quality of life in the community; and,
- To maintain, preserve, and oversee the use of recreational areas under the control and authority of the Township.

# Program Goals and Objectives

The Township of Dennis, through the Township Environmental Commission, has set the following Community Forestry Program goals and objectives in an effort to fulfill its mission over the next five years:

- 1, To maximize public safety relative to trees the Township manages through a proactive approach to tree care and management.
  - a. Once every two years, train Public Works employees in hazard tree identification.
  - b. Use social media to develop a tool for the public to report potentially hazardous trees.
  - c. Once every two years, train Public Works employees in proper pruning techniques.
  - d. Once every two years, train Public Works on proper disposal of diseased or otherwise infected tree material.
2. To fully understand the magnitude of the tree resource for which Township employees are responsible for maintaining and also identify noteworthy trees on public and private land that lend character to the Township.

- a. Using an “app” (TBD), perform a tree inventory and assessment on Township and School Board owned land and update yearly. -5-
  - b. Use social media to develop a tool for the public to report noteworthy trees on public and private property.
3. To encourage Township residents to be good stewards of their tree resource.
- a. Hold annual Arbor Day events with tree seedling giveaways and offer tree educational literature.
  - b. Continuously maintain social media sites.
  - c. Develop and annually hold an event in conjunction/cooperation with the local school to educate the youth of Dennis Township about tree related issues.
  - d. Participate in other Township community oriented events such as National Night Out and Earth Day.
4. To encourage Township Employees to be good stewards of the Townships tree resource.
- a. The Township will make training available annually to CORE trained Public Works employees and Environmental Commission members through the NJ Shade Tree Federation and other sources as they are identified.
  - b. In addition to the Annual NJ Shade Tree Federation Conference, bi-annual training topics from sources such as local experts, Rutgers, NJ Shade Tree Federation, and others as identified, will include:
    - i. proper tree planting and mulching techniques,
    - ii. proper pruning methods,
    - iii. tree identification,
    - iv. hazard tree identification,
    - v. insect and disease management,
    - vi. tree health assessment, and
    - vii. maintenance and care of trees.

## LIABILITY STATEMENT

- a. The Tree Hazard and Liability Objective has not changed since the original management plan was approved. The Township of Dennis views street trees as an asset to the community. The planting, nurturing, and care of street trees, is encouraged by the Township and the Township Environmental Commission; however, as street trees mature they require care, maintenance, and ultimately replacement.
- b. The Environmental Commission will adopt guidelines in order to ensure that “the right tree is planted in the right place”; nevertheless, care and maintenance are required in

order to insure that community trees not only contribute to the environmental and economic vitality of the Township, but also reduce the hazards to public safety.

-6-

- c. In this regard the Township must work within a reasonable budget. Accordingly, the Township may not be able to immediately reach each and every need within the community forest.
- d. It is the intent of this plan to focus on available resources to the greatest extent possible and to work in a logical progression towards a healthy forest with commensurate reduced risks to public safety. It is the opinion of the Environmental Commission that, by taking the logical steps outlined in the plan, the Township will gain public support for plan implementation. Additionally, steps outlined in the plan will aid in demonstrating the long-term benefits to the environment and to public safety.
- e. The Township wishes to become more proactive in the management and care of Community Trees. Through inventory and hazard assessment, the Township will position its Environmental Commission to take corrective action prior to structural tree failure and other hazardous tree conditions.
- f. While it is acknowledged that not all hazardous conditions can be predicted, good maintenance and care will reduce the probability despite the fact that unexpected events may still occur.
- g. Adherence to the attached plan will demonstrate that the Township is devoting reasonable levels of resources in a planned manner to reduce the number of tree related accidents and thereby reduce its exposure to liabilities and increase public safety.

## **Community Overview**

### **History of the Township of Dennis's Environmental Management Related to its Trees**

Understanding Dennis Township's community forest history might begin with our relationship with the extensive Atlantic White Cedar forests in the Atlantic Coastal Plain. Resident loggers, saw millers, and carpenters recall tapping extensive cedar forests in the lowlands associated with creeks and bogs of the Great Cedar Swamp and others. The township once supplied raw cedar logs, shakes, cedar crafted duck boats, furniture, decoys, etc... to a variety of local and regional markets. Along with cedar, White Oak and Jersey Pine was also cut in the uplands for construction, carpentry, and fuel. The cycle of the local agro-forestry industry paralleled the natural Pinelands cycle of fire and corresponding renewed growth. Cedar stands were clear cut and left to sprout again on a cycle of decades. This intensive resource use gave rise to an ecological landscape characterized by long term stability where rapid regeneration preserved a broad range of indigenous species over time. In tandem with declining markets for Atlantic White Cedar, a sharp decline in logging occurred in the second half of the last century.

By the 1980's only a handful of loggers, millers, builders remained and fewer are active today. One mill in the Belleplain community cuts cedar for pallets. The State of New Jersey no longer permits clear cutting of cedar. Although the disappearance of trees has become accepted as an indicator of environmental degradation, a lack of long-term systematic management of the agro forestry industry

damaged the cedar industry and affected the resource itself. Now former pristine stands have been invaded by red maple and other species. As cedars declined, Dennis Township became increasingly suburbanized by clearing and fragmentation of the upland forest for residential, commercial, and municipal construction. An estimated 400 acres were deforested in 1999. -7-

As the Township seeks ratables and must address a deficit in meeting COAH requirements, pressure to develop is intense along upland deciduous forested areas along the eastern part of the Township Route 9 corridor, where some of the forest is second growth over abandoned farmlands. Currently about half of the Township is forested with second or third growth stands of cedar, pine, and a mix of deciduous trees. More than a third is in federal or state ownership and the US Fish and Wildlife Service is aggressively purchasing lands to guarantee a continuous forest cover for habitat preservation. Some old growth cedar stands remain in the Great Cedar Swamp and other wetlands in Belleplain State Forest and other state lands. Old growth pine and hardwood stands are becoming rarer due to residential and commercial development. Because of the Township's rural character, current streets generally follow old country roads and generally lack sidewalks and landscape/street trees. Those that exist are on private property.

The current Master Plan identifies 5 Town Centers and encourages attractive downtown areas including treescaping. These Centers have some notable private specimen trees but none that are maintained by the Township. On Routes 9 and 47 there have been some private plantings along the public rights of way, offering long perspectives of cedars. There is an inventory of 8 specimen trees of great age and girth. These have been registered on the Dennis Township Historic and Landmark Tree Register. But, there is no provision for protection. Efforts to introduce protective ordinances break down with any suggestion of infringing on private property rights. A community wide survey suggested that a tree committee to educate the community about trees and arbor care rather than a Shade Tree Commission with regulatory powers was preferable.

In 1990, The Watsons, DTEC members, canvassed the Township for landmark trees. The identified, measured, and aged a number of old growth trees. They listed them in the Townships Landmark Tree Registry which in turn became a part of the Master Plan of 1998. It is referred to in Township ordinances but without protective language. No one has followed up on those trees since the original Watson survey. However, the reinstated Environmental Commission is currently working to revise and update the registry using the Watson documentation along with previous publications by Lyman Hoffman and Robert Alexander.

Historically and currently the responsibility for trees on public property and rights of way falls to Public Works and is done on an as needed basis. Trees on private property remain the sole responsibility of the owners. The DTEC does write recommendations for replacement planting when site plans reveal deforestation. The Land Use Board supports these recommendations but there are no ordinances on the books to back them up.

## **Township of Dennis's Environmental Management Program Today Regarding Trees**

The DTEC reviews site plans with an eye to preservation of green cover. It requests of planning officials to ask builders to enhance site plans with plantings and to mitigate tree removal with indigenous tree planting. The Commission has a member sitting on the township's Land Use Board as a voting member.



## **The Community's Achievements in Developing and Nurturing Trees in the Community**

The Land Use Board supports sustaining extant tree cover. Members encourage applicants to maintain as much tree cover as feasible while replacing removed trees with native landscape. Tree seedlings are distributed to private citizens at events like Earth Day has increased tree. -8-

## **Problems Encountered and New Issues that Developed and How they were Handled**

The township recently restored the environmental commission with all new members. That reorganized body is in the process of re-establishing programs and projects, some of which were discontinued during the period of hiatus.

## **The Future of the Township's Environmental Management Plan**

The success of the plan requires education at all levels leading to greater appreciation of our arboriculture and knowledge based activities offering increased participation by the DTEC and its community in preserving, maintaining, and planting trees. Consensus on protective ordinances and commitment to our plan will be essential.

## **Dennis Municipal Master Plan, Open Space Plan, and Watershed Plan**

The new Master Plan has been revised. The current Master Plan was approved in 2012.

The DT Landmark tree Registry became part of the Master Plan of 1998 and was updated in the 1994 Master Plan

. The DTEC plans to update this registry to reflect changes during the past almost 20 years.

The new Master Plan includes the existing Pinelands Plan element, Land Use element, and a Conservation Plan element that all refer to protecting and maintaining trees in Dennis Township.

The goals and objectives of the Community Forestry Management Plan are consistent in both the intent of the goals and in the specific outcome of the objectives in the Master Plan and are designed to maximize the aesthetic and physical benefits of the environment to the community.

## **Amendments to this Community Forestry Management Plan**

This plan is based on objectives and conditions that were valid at the time it was developed. However, the Township recognizes that conditions and needs may change over time and that this Plan may become outdated. Therefore this plan may be amended according to the normal Township Committee procedures for policy amendment.

## **Community Forestry Program Administration**

### **Structure of the Environmental Commission and Township Administration**

The management of the community forest and the administration of the Community Forestry Management Program is a cooperative effort between the Mayor, Township Committee, Public Works, Land Use Board, Parks, Office of Emergency Management, the Environmental Commission, and the residents of the Township of Dennis. The Environmental Commission acts on behalf of the Township of Dennis regarding all issues related to trees within the Township. The interaction between the

Environmental Commission, the community, and other Township departments on tree related issues requires a constant exchange of communication and correspondence.

The environmental commission has arranged its meeting schedule to enable timely recommendations to the Land Use Board. A crossover Land Use Board member is also a member of the Environmental Commission to further facilitate communication between the two committees. Similar arrangements will be made with other groups as they are formed. -9-

The Commission chairman and vice-chairman are the primary contact persons and the Commission Chairperson is responsible for the administration of the Commission. All of the Commission members are residents of the Township and are appointed by the Mayor to serve in a volunteer capacity.

### **Current Environmental Commission Members**

The current members of the Dennis Township Environmental Commission are:

Chairperson - Bob Penrose - 12/31/2016	Sue Slotterback - 12/31/2015
Vice Chairperson - Ray Rebmann - 12/31/2016	Brad Rosenthal - 12/31/2015
Gerald J. McManus - 12/31/2016	Alma George - 12/31/2017
Alt. #1 - Frank Hoff - 12/31/2015	Cynthia Leatherwood - 12/31/2017
Chris Castor 12/31/2017	

### **Responsibilities of the Environmental Commission**

The Township of Dennis, both collectively and individual committees, boards, commissions, and

-9-

departments, shall always strive to maximize safety relative to trees as the first priority in regard to all tree related decisions.

- The Environmental Commission is responsible for the oversight and protection of the community forest within the Township;
- The Environmental Commission will provide training resources for the members in Core Training and arboricultural related issues that are related to the community need;
- The Environmental Commission will develop, implement, and support Public Education and Awareness programs;
- The Environmental Commission will develop, implement, and support Arbor Day activities as outlined in the Arbor Day and Tree City USA guidelines;
- The Environmental Commission will develop a tree inventory of Noteworthy trees and maintain the Tree Register;
- The Environmental Commission will assist the Land Use Board in tree planting by providing project development, training resources, and stimulating community support;
- The Environmental Commission may make recommendations for tree ordinances that are based on community comment or a determined need.
- Any amendments made to current municipal ordinances relevant to community forestry practices will be forwarded by this commission will be forwarded to the State Forestry Service for inclusion in this management plan.

## Responsibilities of the Mayor and Committee

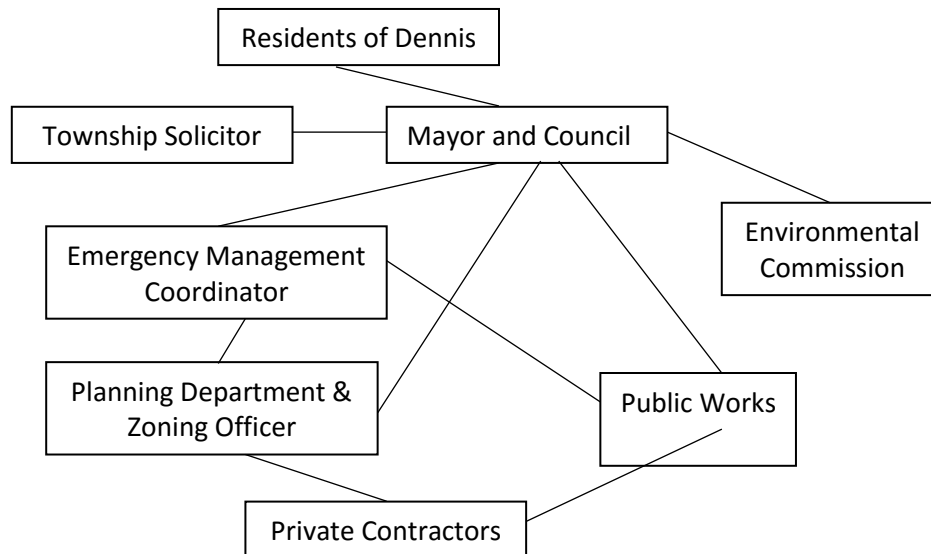
The Township of Dennis, both collectively and individual committees, boards, commissions, and departments, shall always strive to maximize safety relative to trees as the first priority in regard to all tree related decisions.

- The Dennis Township Committee will determine the need for and supplemental ordinances needed for the oversight of planting, maintenance, and removal of trees;
- The residents are required to abide by all ordinances and laws regarding trees in Dennis. - 10-
- The residents should notify the Environmental Commission of any trees that are becoming hazardous, declining or have been injured.
- Residents or property owners may be required to water new plantings on their property.

## Current Tree Related Ordinances (selections)

**There have been no new or amended municipal ordinances enacted by the Township of Dennis since the last Community Forestry Management Plan was submitted.**

## Organizational Chart



## Responding to Tree Service Requests

The Public works Department is responsible for all tree maintenance and removal. Tree service requests are received from residents, the mayor or council, or members of the Environmental Commission. All requests are received or put into written form. All requests are reviewed by the Public Works Director. Each request is evaluated according to individual need and the overall objectives for that location.

Potentially hazardous trees have the highest priority and are addressed immediately. Pruning

requests are combined with scheduled pruning plans whenever possible. Tree removals are usually planned individually.

## **Contracting Tree Service Companies**

The Public works Department performs most of the township tree maintenance and removal. Outside contractors are not used very often.

- A large pruning project may be performed by contracted private tree service companies.

-11-

- Most of these projects are planned well in advance so as to allow time to receive bids from at least 3 local tree service companies.
- Emergency Management Plan may include receiving bids from local companies for emergency tree care at a pre-established cost per hour or day.

## **Training Plan and Professional Development**

The Township of Dennis is committed to maintaining a high standard of quality in both the development and the maintenance of the urban forest in the Township. This standard can only be achieved through ongoing training and professional development of all individuals that are part of overseeing the community forest. These programs will:

- Ensure that members of the Environmental Commission and municipal personnel have the training necessary and the information available to properly manage the community forest.
- Create a continually increasing pool of members within the community that are trained or experienced in the field of arboriculture.
- Ensure that tree evaluations, tree planting, and tree maintenance are performed to consistent standards.
- Fulfill the requirements of the New Jersey Environmental and Community Forestry Assistance Act that reduces or eliminates the liability of the Environmental Commission and the Township under the Tort Claims Act.
- Ensure that the community forest in the Township of Dennis continues to be a cherished and valuable asset to the community
- Encourage participation in local Master Gardener and Environmental Stewardship programs offered through Rutgers Cooperative, and training offered locally by other agencies such as ANJEC or the Nature Conservancy

### **Current Training Needs**

The Environmental Commission has identified the following areas where ongoing training is necessary:

- Core Training for members of the Environmental Commission and municipal personnel.
- Tree Hazard Identification for members of the Environmental Commission, municipal personnel, and volunteers.
- Basic Arboriculture, tree identification, and proper pruning techniques for members of the Environmental Commission and municipal personnel.

- Community based teaching seminars open to all residents of the Township of Dennis.
- Encourage participation in local Master Gardener and Environmental Stewardship programs offered through Rutgers Cooperative, and training offered locally by other agencies such as ANJEC or the Nature Conservancy.

## **Existing Programs, Policies & Procedures**

The Public Works Director and several members of the Environmental Commission are currently Core Trained.

-12-

- The Environmental Commission sends new Environmental Commission members to Core Training sessions each year.
- The Public Works Director may send at least one municipal employee to training sessions each year.
- The Environmental Commission educates the community through presentations at the Arbor Day and National Night Out activities and educational seminars.

## **2015–2019 Objectives**

### **1. Core Training Program** (Annual training 2015-19)

Send new members of the Environmental Commission and at least one municipal employee to a Core Training seminar that will satisfy the requirements for the New Jersey Environmental and Community Forestry Assistance Act Core Training. Ongoing Training (Annual training 2011 -2014)

Send at least two members of the Environmental Commission or the municipal government to training opportunities that satisfy the Continuing Education requirements of the New Jersey Environmental and Community Forestry Act.

### **2. Tree Hazard Identification** (Annual training 2016 -2019)

Provide training seminars for members of the Environmental Commission, municipal personnel, and volunteers to be able to identify hazardous tree characteristics and to rate them according to an accepted hazardous tree rating system.

### **3. Young Tree Pruning Methods** (Annual training 2016-2019)

Provide training seminars for members of the Environmental Commission, municipal personnel and volunteers on methods of pruning young trees.

### **4. Specialized and Advanced Training** (Continuous 2015 -2019 as funding sources become available)

In addition to the training listed above, at least one member of the Environmental Commission and a municipal employee should receive specialized training in at least one of the following categories:

Basic Arboriculture, tree identification, and proper pruning techniques, outreach training, volunteer recruitment, budgeting, legal responsibilities, planting, urban soils, tree care disaster planning, sidewalk/tree conflicts, recreational use of woodlands, writing specifications for bidding proposals, tree selection, soil amendments, root barriers.

## **Training Sources**

The Environmental commission will continue to utilize a variety of training and information sources including:

- The New Jersey Forestry Council's Training & Accreditation Program.
- Local & Regional Environmental Meetings & Seminars (New Jersey Environmental Federation,

New Jersey Chapter of the International Society of Arboriculture, ANJEC, Rutgers Cooperative Extension Service, Rutgers University Office of Continuing Professional Education, Committee for the Advancement of Arboriculture, etc.)

- In-House Training Sessions & Workshops.
- Trade Publications and Educational Materials (materials distributed by the above groups will continue to be received and distributed).

-13-

## **Outside Contractors & Public Utilities**

Outside individuals must have sufficient training and knowledge to properly perform any work done on or around the township's public trees. All work will conform to ANSI A-300 Pruning Standards and performed in a manner consistent with ANSI Z-133 Safety Standards.

## **Public Awareness Education and Outreach**

Community awareness and education is a high priority for the Environmental Commission and is listed as one of the primary objectives in our management plan. The Environmental Commission recognizes the need to promote and develop more programs that stimulate public interest, appreciation, and support for public trees and proper maintenance of private trees.

## **Existing Programs, Policies & Procedures**

- **Arbor Day:** Arbor Day is celebrated in the Township of Dennis at the elementary school. Activities typically include a tree planting programs and a presentation, possibly by a certified arborist.
- **Press Releases:** Press releases relating to current events and tree-related concerns are distributed to local newspapers when appropriate, typically for Arbor Day.
- **Informational releases** will be developed with hard copy made available to the public as well as being promulgated via the township website and Environmental Commission Facebook page

## **2015—2019 Goals**

The Environmental Commission will be develop, implement and support Public Education and Awareness programs that address the community need or interest. Some of the projected projects will:

1. Stimulate public interest and community participation in identifying and preserving landmark and specimen trees
2. Develop a portable display featuring landmark trees of Dennis Township Tree Registry and forms to submit potential trees for inclusion. Locate, assess, measure and photograph trees. Display will be housed at the local museum with periodic "tours" of municipal buildings and local schools.
3. Develop handouts and articles about the Environmental Commission, community benefits of trees, tree care, planting, infestation control, landmark tree registry and preservation.
4. Stimulate public interest, appreciation and support for public trees and the proper maintenance of private trees.
5. Consider the benefits of establishing a Shade Tree Committee (or subcommittee of the existing environmental commission) to take the lead

in Forestry Management Plan activities

6. Provide educational seminars on tree selection, planting, pruning, and maintaining trees
7. Support Arbor Day presentation to local school district or other interested group on benefits of trees in our community, tree planting demonstration, distribution of seedlings.

## **2015-2019 Objectives Presentations**

**-14-**

### **School Presentations** (April 2016- Continuous)

The Environmental Commission will sponsor an Arbor Day event at the elementary school. An educational program will be implemented at the elementary school that relates to understanding trees and their importance to our community.

### **Arbor Day Presentation and/or National Night Out** (April 2015- Continuous)

An educational program and tree planting demonstration will be performed. Local newspapers will be contacted in March and supplied with information on plans for Arbor Day activities at the park and the elementary school.

An educational program, tree proclamation, and tree planting demonstration will be conducted.

### **Community Outreach** (March 2015- Continuous)

A booth display will be sponsored by the Environmental Commission for community events that will provide information and resources on the following topics: The importance of maintenance pruning on street trees on private property, preserving landmark trees, the importance of enhancing and sustaining Dennis's community forest, and the importance of protecting the urban forest as the Township of Dennis expands with new development projects.

### **Educational Seminar** (March 2016- Continuous)

A seminar will be presented on selected arboricultural topics.

### **DTEC Demonstration Garden** (Continuous)

indigenous plants and trees will be planted, labeled and described in the DTEC Demonstration Garden as well as at the museum and school (in cooperation with the local school).

### **Significant Tree Preservation** (January 2016 -Continuous)

The Environmental Commission will make a presentation on Preserving Landmark Trees to the Dennis Township Historic Homeowners Association and interested residents. Records will be maintained at the Old School House Museum.

## **Community Based Training Programs**

These training programs are developed for municipal employees and Environmental Commission members and are also open to Dennis residents.

### **Tree Planting Demonstration** (annual training 2015 -Continuous)

A proper tree planting demonstration at the DTEC Demonstration Garden will be sponsored by the Environmental Commission and include municipal employees.

### **Young Tree Pruning Methods** (annual training 2015 -Continuous)

A training seminar will be provided for members of the Environmental Commission, municipal personnel and Dennis residents on methods of pruning young trees.

### **Specialized and Advanced Training** (2015 -Continuous, as funding sources become available)

A special educational seminar will be provided to the residents on tree-related topics such as: Basic Arboriculture, tree identification, proper pruning techniques, tree planting, soil

amendments for urban soils, sidewalk/tree conflicts and root barriers, recreational use of woodlands.

### **Community Based Planting Programs**

(This section is also included in the Tree Planting portion of this plan)

#### **Tree-planting projects (March 2015 - Continuous)**

- The Environmental Commission will implement planting projects throughout Dennis Township that are well publicized and enhance community support for trees.
- The Environmental Commission will implement a 3-year watering plan for trees planted by the Environmental Commission that includes a budget

-15-

#### **"Free-Tree-for-Township-Residents" project (Continuous)**

- The Environmental Commission will distribute tree seedlings to residents at township events such as the Dennis Township National Night Out.
- The Environmental Commission will sponsor a "Free-Tree-for-Township-Residents" event as a community event that includes an information table and a tree planting presentation.

## **Developing Information and Resources**

### **Significant Tree Preservation (Continuous)**

- The Environmental Commission will develop a list and map of the landmark trees of Dennis Township in a Tree Registry that includes a formal certificate of registry. This can be conducted in conjunction with the township Land Use Board and the Old School House Museum, both of which have earlier records of tree surveys conducted in the township. Ongoing surveys will also become part of the historical record available for easy access research by interested members of the public.
- The Environmental Commission will stimulate public interest and community participation in identifying and preserving landmark and specimen trees. The commission will communicate with local schools, senior groups, scout troops and other potential interest groups to promote this element of the program.
- The Environmental Commission will develop a portable display featuring landmark trees of Dennis Township Tree Registry and forms to submit potential trees for inclusion. Locate, assess, measure and photograph trees. The display could be rotated from the municipal building to other "centers" in the township (school, senior center, museum, post office). It will include updated (and if available, older) photos and relevant data.

### **Literature Distribution (January 2015-Continuous)**

- The Environmental Commission will provide information to residents and community organizations that include the following topics: Proper maintenance and care of trees, proper watering and care of young trees, tree planting, maintenance, pruning, and tree hazard awareness.
- The Environmental Commission will develop handouts and articles about the Environmental Commission, community benefits of trees, tree care, planting, infestation control, and landmark tree preservation.



**Optimum Tree Species List** (January 2016 - Continuous)

The Environmental Commission will develop a list of the optimum tree species for the community that is based on the existing soils, actual wind and water conditions, salt tolerance, planting constraints, aesthetic qualities, hardiness, and insect & disease resistance and the tree's beneficial qualities in relation to the migratory bird population

**Tree Care & Landscape Advice** (January 2017-Continuous)

The Commission will serve as a reference source for Township residents and bona-fide agencies seeking advice on tree maintenance, preservation and landscape design. This service will be provided at no charge when personnel are available.

**The Dennis Environmental Commission Brochure** (January 2016 -Continuous)

The Commission will develop a brochure about the importance of trees, the purpose of the Environmental Commission, and existing tree ordinances in Dennis.

**Web Site**

Developing a website for the environmental commission will be a priority in 2015. It will include on the Environmental Commission website an interactive format for identifying notable trees and reporting tree hazards, links to arbor resources and agencies and information on selecting planting, pruning, protecting and maintaining trees.

**Press Releases** (January 2015-Continuous)

Develop press releases relating to current events, indigenous trees, pruning, planting, and tree-related concerns to be submitted to The Herald and other local newspapers.

**Develop a Photo CD** (January 2015)

The Environmental Commission will develop a Photo CD Rom of Dennis Township's environmental highlights emphasizing our forests and ecology and resulting outdoor recreational opportunities for distribution at Township events. This CD will be available at the municipal building as well as at the township's Old School House Museum.

**Tree City USA:**

The Township of Dennis will apply for the Tree Township USA designation.

## **STATEMENT OF THE TREE BUDGET**

A goal of this management plan is to maintain a balance between long term development of the community forest and budgetary limitations, while avoiding any compromises in public safety.

## **Funding Sources**

**Municipal:** The Environmental Commission has a yearly budget allotment from the Township of \$1000 per year.

The Environmental Commission also receives support through services in kind for the needs of the commission administrative needs, equipment and materials for tree planting projects, and non-contracted or emergency pruning and removal. Tree planting, maintenance, and removal projects are funded on an individual basis.

**Private and Corporate Donations:** Monetary donations are rarely received from private and corporate sources in the community. Volunteer time, landscaping materials, and labor are contributed privately and corporately from residents and businesses in the community.

**Grants:** No grant money is received at the present time. Environmental Commission members will coordinate with township officials and employees to apply for available grants.

## BUDGET 2015

Revenue		
Source	\$ Cash	\$ Services In-Kind
Municipal Contribution	1,000	200
Green Communities Grant	Applied For	
Private Contributions		600
Municipal Admin Services	900	
Public Works Tree Maint.	2,800	
Leaf and Brush Collection		37,000
Volunteer Services		1,800
<b>Total Revenue</b>	<b>4,700</b>	<b>39,600</b>
Expenses		
Source	\$ Cash	\$ Services in Kind
Pruning, Maintenance, Removals	2,800	1,800
Training and Education	500	
Arbor Day Activities / Garden	350	
Administrative Expenses	900	600
Leaf and Brush Collection		37,000
Brochures and Displays	150	
Web Page		200
<b>Total Expenses</b>	<b>4,700</b>	<b>39,600</b>

## Statement of Plan Implementation

This section establishes the timeline for implementation of the Goals and Objectives and explains in detail how the goals will be realized. The Township Environmental Commission was reconstituted in 2014 and an effort to update the Township's Community Forestry Plan was begun almost immediately using only the existing plan and the effort and knowledge of the three member Community Forestry Subcommittee of the Environmental Commission. The Goals and Objectives were updated and the following implementation timeline developed. If grant funding becomes available, it may be possible to expedite some of these tasks through the hiring of qualified professionals. It is currently anticipated that all work related to the Community Forestry Plan will be completed by volunteers from the Environmental Commission.

### Year 1, 2015

- Identify sources for training and include any costs in next year's budget. Attend the annual NJ Shade Tree Federation Conference in October. -19-

- Establish a subcommittee of the Environmental Commission to develop and maintain social media sites.
- Gather tree inventories of noteworthy trees completed by past Environmental Commissions.
- Participate in Earth Day, National Night Out, and School Events with free seedlings made available through the Superstorm Sandy Reforestation Program.

### **Year 2, 2016**

- Select members of the Environmental Commission to identify and learn to use an “App” for use in conducting the Tree Inventory and complete an inventory around the Township Historical Museum and Township Hall. While performing the inventory sites for new trees will be identified and existing trees will be assessed for hazards and vigor.
- Begin developing Township specific tree educational literature for posting on the Township website and associated social media sites. Focus on tree pests and the importance of not moving firewood from one area to another. Work with campground owners to educate campers.
- Use social media to collect tree information from the community and make educational materials available.
- Attend the annual NJ Shade Tree Federation Conference in October.
- Provide training for Township employees focusing on Hazard Tree Identification and Management, Proper Pruning Techniques, and Disposal of Diseased or Infested Wood. Talk about the tree inventory, the importance of record keeping and informing the Environmental Commission of tree related activities.
- Participate in Earth Day, National Night Out, and School Events with free tree seedlings made available through a grant funded program. Educate the public about proper planting techniques to encourage survival and long-term success of the tree seedlings.

### **Year 3, 2017**

- Update the tree inventory around the Museum and Township Hall and perform an inventory at the Township Recreation Center. While performing the inventory sites for new trees will be identified and existing trees will be assessed for hazards and vigor.
- Attend the annual NJ Shade Tree Federation Conference in October.
- Participate in Earth Day, National Night Out, and School Events with free tree seedlings made available through a grant funded program. Educate the public about proper planting techniques to encourage survival and long-term success of the tree seedlings.
- Continue developing Township specific tree educational literature for posting on the Township website and associated social media sites. Focus on tree selection and develop an optimum tree species list for Dennis Township.

- Use social media to collect tree information from the community and make educational materials available.

#### **Year 4, 2018**

- Update the tree inventory around the Museum, Township Hall, and Recreation Center and perform an inventory at the Primary School. While performing the inventory sites for new trees will be identified and existing trees will be assessed for hazards and vigor.
- Continue developing Township specific tree educational literature for posting on the Township website and associated social media sites. Focus on tree selection and maintenance.
- Attend the annual NJ Shade Tree Federation Conference in October.
- Provide training for Township employees focusing on Hazard Tree Identification and Management, Proper Pruning Techniques, and Disposal of Diseased or Infested Wood. Talk about the tree inventory, the importance of record keeping and informing the Environmental Commission of tree related activities.
- Participate in Earth Day, National Night Out, and School Events with free tree seedlings made available through a grant funded program.
- Use social media to collect tree information from the community and make educational materials available.

#### **Year 5, 2019**

- Update the tree inventory around the Museum, Township Hall, Recreation Center, and Primary School and perform an inventory at the Intermediate School. While performing the inventory sites for new trees will be identified and existing trees will be assessed for hazards and vigor.
- Continue developing Township specific tree educational literature for posting on the Township website and associated social media sites. Focus on tree care and pruning techniques.
- Attend the annual NJ Shade Tree Federation Conference.
- Participate in Earth Day, National Night Out, and School Events with free tree seedlings made available through a grant funded program.
- Use social media to collect tree information from the community and make educational materials available.

## **TREE INVENTORY PLAN**

### **Goals**

A Tree Inventory Plan will be developed on an ongoing basis. The goal is to have an information and data resource that is accurate, but can also be updated and maintained in an efficient manner. A

review of the actual need for the specific information maintained in the inventory that is compared to the cost and difficulty of maintaining each of those attributes should determine which of the following needs the inventory process will fulfill.

The iTree software and inventory method will be considered for use by the Public Works Department, environmental commission and other interested municipal departments on a trial basis. The software will need to be examined before a final decision is made.

Information and data that is gathered will be maintained in a data base to accomplish the following goals: The Environmental Commission will develop a tree inventory of 'Noteworthy Trees'.

The Public Works Department will implement a tree inventory system that contains the following tree information:

- Inventory of Young Trees.
- Inventory of trees that require Tree Maintenance.
- Inventory High Risk Trees.
- Inventory of Open Planting Sites.

Additional information related to the community forest that may be necessary for tree selection or determining maintenance cycles will be determined through a sample survey of the trees at that time.

Proper management of the urban forest requires a thorough working knowledge of the tree population which includes species diversity, age class diversity, planting potential, overall condition and specific environmental limitations, and the current risk potential associated with large trees in a populated community

The population of street trees and trees that are directly under the responsibility of the Public Works Department is a small fraction of the actual tree population within the community. It is important to maintain a database of the large trees with defects, areas of high risk of tree failure, open planting areas, and trees that need watering and pruning. However, to effectively understand the condition of the urban forest in Dennis Township and provide a service to the community it is important to focus on understanding the entire tree population within the Township and the surrounding communities

In addition to inventorying populations and conditions of street trees and trees on other Environmental Commission sites, it is important to assess and inventory trees on private properties. These trees may be declining, over- mature, diseased or insect-infected, important to migratory birds, or their condition may otherwise be Noteworthy to the community. Also, when groups of trees are removed, whether a small number during road improvements, or the loss of several acres of woodland such as in new construction projects, this data is a valuable part of a complete tree inventory regardless of whether it occurs on private or public lands.

## **Objectives**

The Public Works Department and the Environmental Commission will gather information on open

planting areas that include the address, location, planting area width, overhead wires, planting restrictions, and tree recommendations. (2015-2019)

The Environmental Commission will gather information on the location of Noteworthy trees from previous planting records. These trees may need to be re-assessed for pruning. (2015-2019)

The Public works Department will gather information on trees that have been pruned to reduce potential hazards and streets that have a population of trees larger than 16 inches in diameter. These trees may be used for the initial assessment of the tree maintenance and Hazard assessment. (September 2015- Continuous)

The Public works Department will determine the actual need and most efficient method of maintaining this information. Re-evaluate what information the Public Works Department is actually going to use. (September 2015-Continuous)

## **TREE HAZARD IDENTIFICATION AND RISK MANAGEMENT**

### **Scope**

Hazard evaluation is one component of a comprehensive Risk Management Program. A Risk Management Program includes a tree assessment process of examining trees, rating their likelihood of causing damage, and taking action to abate the hazard or to reduce the risks associated with the trees. Risk Management should also include the process of avoiding potentially hazardous situations from developing by applying proper planning, planting techniques and tree maintenance.

Dennis has a low number of large or over-mature trees on public property. However, there are many large trees on private or residential properties. The Public Works Department has the primary responsibility of tree risk management for the trees that are on Township property or streets. The municipal government also has a responsibility to the community to improve public safety by providing information and resources to the community related to hazardous trees on private property.

### **Existing Programs, Policies & Procedures**

The Public works Department is responsible for initially responding to issues related to hazardous trees. A determination is made as to either the tree is the responsibility of the Township or a private property owner. The Code Enforcement officials can deem a tree hazardous and notify the homeowner to remove it within 30 days. The Township has the authority to remove the tree and have a lien placed on the property for the cost of removal.

### **Goals**

The Public Works Department will be responsible for the implementation of a Tree Risk Assessment. The decision to perform a Tree Risk Assessment of the trees within the Township and the implementation of a tree risk management plan may need to be approved by the Township Committee. The Environmental Commission recommends the following goals:

1. To improve public safety by detecting, evaluating, and correcting or removing hazardous trees.
2. To improve public safety through proper management of the tree resource by avoiding the creation of potential hazards caused by improper planning, planting, and maintenance of trees.
3. To actively demonstrate that the Environmental Commission and the Township have been responsible in the management responsibility of improving the safety of people and property.

### **Method Used For Hazard Evaluation**

Hazard Evaluations will be based primarily on the method outlined in "Urban Tree Risk Management: A Community Guide to Program, Design and Implementation, USDA Forest Service, Northeastern Area, (NA-TP-03-03)". The Environmental Commission will ascertain whether it has a copy of this resource available.

The Guide is designed to assist managers in evaluating trees for their potential to be hazardous, provides a systematic approach to rating hazards.

"Tree risk management involves the process of inspecting and assessing trees for their potential to injure people or damage property. Traditionally the term "hazard" (or hazardous) has been used in the context of evaluating trees for their failure potential. To many people, "hazard" suggests trees at immediate risk for failure. In this guide, "hazard" trees are defined as trees with structural defects that may cause the tree or tree part to fail, where such a failure may cause property damage or personal injury. Trees will vary, ranging from low- to high-risk for failure and may require attention immediately or in the near future. The threshold of risk acceptable to liable parties is dependent upon their policies and objectives. Trees that surpass the level of acceptable risk are hazards from a programmatic viewpoint. An understanding of tree and forest biology is also an integral component of any tree risk management program. The perception of safety or acceptable levels of risk is equally or sometimes more powerful than the reality of the condition of a tree and the situation that it is growing in. Community leaders, employees, and residents that do not have forestry backgrounds often make forestry decisions that are based on local politics, emotions, and perceptions of safety. In order to make objective, science-based decisions on the safety of trees and the urban forest, individual trees and site conditions need to be evaluated for the level of risk that they do or do not present." (Urban Tree Risk Management, Chapter 2, page 7)

#### **Tree Risk Management Program Planning and Design: A Ten Step Approach**

- Step 1. Assess the tree resource
- Step 2. Review current tree management practices
- Step 3. Assess fiscal and human resources available to manage the tree resource
- Step 4. Identify program goals
- Step 5. Formulate a tree risk management strategy
- Step 6. Prioritize inspection and corrective action needs
- Step 7. Select a tree risk rating system
- Step 8. Write a comprehensive tree risk management program policy
- Step 9. Implement a tree risk management strategy
- Step 10. Evaluate and revise



## **Objectives**

### **Tree Hazard Evaluation Method January 2016-June 2017**

A Tree Risk Assessment will be performed. A selection of the risk management method needs to be determined. Several assessment methods are available for implementation by municipalities or the assessment can be performed by an outside contractor. The final decision will need to be approved by the Township Committee.

### **Removal of Hazardous Trees**

The Public Works Department is responsible for the removal of trees on Township managed property. Tree service companies may be used to perform services that exceed the resources of the department.

The approximate timeline for hazardous tree removal has been included in the following Tree Maintenance section of this document.

### **Objectives 2015-2019**

#### **1. Tree Hazard Evaluation**

A Tree Risk Assessment will be performed that is based primarily on the method outlined in "Urban Tree Risk Management: A Community Guide to Program, Design and Implementation, USDA Forest Service, Northeastern Area, (NA-TP-03-03)"

- a) A workgroup will be formed by the Public Works Department to perform the risk assessment.
- b) A training session will be held to educate the workgroup and any interested members of the Environmental Commission, municipal employees or interested members of the community on the methods of risk assessment and hazardous tree classification that can be used.
- c) The workgroup will select the method of assessment to be used and the method of recording the information according to the USDA Guide to Urban Tree Risk Management (NA-TP-03-03).
- d) The workgroup will develop a list of specifications for the assessment.
- e) The workgroup will perform the Risk Assessment with assistance from a qualified arborist if necessary.
- f) A complete report of the risk assessment will be submitted to the Public Works Department for approval and implementation.
- g) The Public Works Department will determine the need and timeline for additional assessments based on the report from the initial risk assessment.

#### **2. Removal of Hazardous Trees and Pruning for Hazard Reduction (ongoing)**

Trees that present a severe hazard or trees that have been identified for immediate removal in the risk assessment will be addressed and contracted separately.

Trees that require removal or pruning for hazard reduction will be grouped according to recommendations by the workgroup and contracted to a tree service company.

#### **3. Development of a Risk Management Plan (January 2016-2017)**

In January of each year all of the Hazardous Tree Complaints from the previous year will be reviewed. Trends in tree decline, species with high hazard development, and areas within the Township that have high rates of hazard development will be evaluated according to the USDA Guide to Urban Tree Risk Management (NA-TP-03-

03). Decisions on long-term methods of hazard reduction will be addressed. Methods of maintaining a mature tree canopy within the Township while maintaining age and species diversity will be reviewed. Preliminary planting, pruning, and removal forecasts will be made, based on the information available.

## **TREE MAINTENANCE**

The goals of a good tree maintenance program are to maximize public safety relative to public trees, to maintain a healthy tree canopy, and to maintain a balance between long term development of the community forest and budgetary limitations.

### **Goals**

- Implement a Tree Hazard Identification and Risk Management Plan that reduces liability by managing hazardous trees.
- Maintain and protect the existing mature and young trees throughout the Township through proper maintenance.
- Develop and implement a long-term and short-term maintenance plan for areas that have been assigned to be the responsibility of the Environmental Commission.
- Maintain the health and vitality of the community forest, including both old and young trees.
- Maintain the appearance of the community forest.
- Perform maintenance pruning on mature trees that are on Township-owned property and encourage maintenance pruning on mature street trees that are not on Township-owned property.
- Implement a pruning program for all young trees that includes training for municipal employees.
- Review new methods for maintaining mature trees such as modified sidewalk material, soil modification, and tree growth regulators. Utilize resource agencies such as the NJ Department of Agriculture, NJ Shade Tree Federation and Rutgers Extension Master Gardeners' program for guidance in this area.
- Examine the feasibility of implementing an ongoing watering/custodial plan for new tree plantings. Such feasibility would be dependent upon considerations not limited to budgetary and time constraints.

### **Objectives 2015-2019**

1. Hazard Reduction (January 2016-December 2017)
  - Evaluate all tree hazards that are reported to the Public Works Department.
  - Schedule the pruning or removal on a priority basis that will eliminate any potential safety risks as quickly as possible.
  - Trees that present a severe hazard or trees that have been identified for immediate removal in the risk assessment will be addressed and contracted separately.
  - Trees that require removal or pruning for hazard reduction will be grouped according to recommendations by the workgroup and performed by Public Works Department or contracted to a tree service company.

2. Hazard Reduction (January 2016-December 2017)

- Evaluate all tree hazards that are reported in the tree risk assessment.
- Review any recommendations from the Risk Management review and determine the current needs for future development.
- Schedule the pruning or removal on a priority basis that will eliminate any potential safety risks as quickly as possible.

3. Young Tree and Small Tree Pruning (April 2017-December 2017)

- A training session will be held to educate the workgroup and any interested members of the Environmental Commission, municipal employees and interested members of the community on the current methods of young tree and small tree pruning. Solicit the volunteer services of locally based tree maintenance professionals to help with this training.

4. Pruning and Removals (June 2017-December 2017)

Evaluate the requests for pruning that have been received in service requests.

- Review the tree maintenance needs for the upcoming year, including pruning of young trees and watering. Determine the actual amount of pruning to be done and schedule the work that will be done in house.
- Request bids from at least three tree service companies for large projects that need to be contracted out. Include specifications for the work to be performed from the ANSI A-300 Pruning Standards and require all pruning to be done within those standards. Oversee all work performed to assure that it is performed according to the pruning standards

5. Public Park Tree Care Program (June 2015-Continuous)

- The Public Works Department and the Environmental Commission will form a workgroup to develop and implement a maintenance plan for public parks and other recreational areas that have been assigned to be the responsibility of the Environmental Commission. This workgroup will develop a long-term plan for the care of trees that are significant in the park and recreational areas, which will optimize the balance between tree health, maintenance costs and budgetary constraints. This plan will be presented to the Environmental Commission or the Planning Department for further development.
  - The plan will include maintenance pruning on trees that are on park property.
  - The plan will protect the park trees by making recommendations regarding the park use.
  - The plan will address issues related to the loss of mature trees and planting new trees within the parks. Special attention will be paid to pest concerns especially gypsy moth and pine beetle.
  - The plan will review new methods for maintaining mature trees.

## **TREE PLANTING IMPLEMENTATION PLAN**

A well-planned and properly implemented tree-planting program is vital to the development and maintenance of the community forest. Tree planting is important in maintaining a balance of the age and diversity of the tree population. Establishing this balance through selective tree planting programs is as important as filling the open planting areas to a maximum capacity.

## Objectives 2015-2019

1. Increase the tree population with a proactive tree-planting program that matches the specific tree to the specific planting area by factoring in all of the planting parameters.
  - a. Determine the number of trees that should be planted in the upcoming year, considering budget constraints, available resources, and the optimum number of young trees that should be planted in the community forest to maintain a balanced diversity in age range.
  - b. Review the list of open planting spaces and select locations based on planting priority and age diversity.
  - c. Select the most suitable tree for each site from the Optimum Tree Species List, matching the open space specifications with the optimum tree characteristics
  - d. Determine the tree cost, planting cost, and first year maintenance cost.
  - e. Prioritize all planting sites and determine the approximate planting schedule.
  - f. Contact property owners to inform them of the plan. Have the property owner sign a liability waiver or release if appropriate.
  - g. Schedule a landscape supervisor or certified tree expert to oversee the planting.
  - h. Purchase the trees. Where possible, solicit donations from local businesses and organizations. This is not only a potential cost savings but could encourage greater community involvement in the effort.
  - i. On the day of planting, provide as much visible support from members of the Environmental Commission and other township officials as possible. Contact the media if practical.
  - j. Re-evaluate all plantings after 30 days and 90 days.
  - k. Finances permitting, replace any trees that have died within the first year. Evaluate the dead trees and planting locations for any obvious reason for the tree failure.
  - l. Add the new trees to the inventory.
2. Community Tree Planting Projects (2015-2019)
  - a. Form a workgroup to develop a program for community participation in tree planting projects.
  - b. Contact other organizations and groups within the community to get a cooperative effort in planting trees in Dennis.
  - c. Contact local businesses to get support and possible funding for planting trees in Dennis.
  - d. On the day of planting, provide as much visible support from members of the Environmental Commission and other local officials as possible. Contact the media.
3. **Specialized Tree Planting Projects (January 2017-2018)**

Examine alternative methods for planting trees in difficult growing areas using composite soils and specialized drainage techniques. These might include abandoned quarries, "dumps", or other disturbed sites.

## TREE ORDINANCE ESTABLISHMENT

The urban forest is quickly vanishing due to over-development. The Environmental Commission must recognize this issue and be prepared to address it. Trees are disappearing at a faster rate than the ability to replace them. The Environmental Commission will need to take a proactive approach to making recommendations to the municipal administration to protect trees if the Township of Dennis expands with new development projects.

## Goals

- Protect trees as the Township of Dennis expands with new development projects.
- Address issues related to the loss of mature trees within the community.
- Develop recommendations for supplemental ordinances to address areas of concern, some of which are; the oversight of planting, maintenance, tree preservation during development, and removal of trees that are on Township property, the removal of hazardous trees on private property, tree planting in new developments, and tree planting in re-developed areas.

## Existing Programs, Policies & Procedures

The Environmental Commission currently makes recommendations to the Township Committee and Land Use Board regarding tree related issues. A member of the commission serves as a “crossover” voting member of the Land Use Board.

## Objectives January 2015-December 2019

1. If approached by township committee to do so, the environmental commission will form a subcommittee within the Commission to develop recommendations for a supplemental ordinance to be submitted for consideration by the governing body.
2. Review tree related issues of concern that have been brought before the Environmental Commission and develop a list of practices that may need more regulation or involvement by the commission. Some of these issues may be:
  - a. Reviewing plans submitted to the Land Use Board that involve tree planting.
  - b. Township projects that involve planting or removing street trees.
  - c. Planting of trees by development contractors.
  - d. Encourage development and implementation of a uniform set of planting specifications.
3. Determine the pertinent areas of applicable regulation and gather information from all tree industry sources regarding ordinances for the issue.
4. Review the sample supplemental ordinances in the core manual text for supplemental ordinances.
5. Review concerns regarding supplemental ordinances with the Mayor and the Township Solicitor to gather information.
6. Assist in the development of parameters for an ordinance and present it to the Solicitor for a final draft with any other supplemental information.
7. Advocate for the development and revision of supplemental ordinances to address areas of concern.
  - a. Development of new ordinances could include:
    - i. An ordinance to implement the penalty portion of the state statute for damage to municipally owned trees that is described in New Jersey State Statute 40:64-12.
    - ii. An ordinance to include the new ANSI A-300 (Part 5) national standards for tree preservation during development and construction.
    - iii. An ordinance to include the new ANSI A-300 (Part 6) national standards for transplanting trees into all specifications for tree planting.

# TREE LEAF RECYCLING

## Programs, Policies & Procedures

- The Township of Dennis has a program for recycling leaves. Residents can receive one pick-up in the spring and one pick-up in the fall.
- The Township also has a program for recycling trees that are left by the curb. Residents can receive one pick-up in the spring and one pick-up in the fall.
- All material is recycled back into the environment.
- No expansions or changes are planned at this time.

# INTEGRATED PEST MANAGEMENT

Development of an Integrated Pest Management approach that focuses on proper tree selection, site enhancement, insect threshold and predation, and tree health to reduce the need for pesticide control. The Environmental Commission will reach out to “professionals” to obtain expert guidance and current procedures in these areas.

## Existing Programs, Policies & Procedures

Southern pine beetle and Gypsy moth have already caused a significant number of tree deaths in the township. Bacterial leaf scorch is expected to become a problem in the near future. Aerial spraying for the Gypsy moth has been effective. Chemical treatment for the Southern pine beetle or BLS has not been considered to be effective. Tree removal of dying or dead trees has been the most efficient practice.

## Objectives January 2015-December 2019

Development of an Integrated Pest Management Plan (Continuous)

1. Review the information gathered in the inventory process to determine the extent of insect and disease damage. Bacterial Leaf Scorch, Southern Pine beetle, and several other weevils and beetles are already in the proximity of the Township. Contact NJ DEP/Department of Agriculture for input on local conditions and potential responses.
2. Contact an arborist with a Pesticide Applicators License in category 3-A to review the information gathered and determine which insects and diseases are above the threshold of tolerance for the trees or will become a serious problem.
3. Consider all options of control: removal, improvement of plant vigor, reduction in environmental conditions beneficial to the insect or disease, pruning, pesticide application.
4. Pesticide applications will be performed using the most bio rational and least toxic pesticide available.
5. Trees with a high susceptibility to insects or diseases will be eliminated from the list of acceptable species for planting.

# EMERGENCY MANAGEMENT PLAN

An Emergency Management Plan is needed to manage severe tree damage in the event of a severe storm or hurricane. -30-

## Goals

- Develop an emergency Cleanup Plan and a critical path or emergency route priority list.
- Establish locations for storing debris.
- Develop a list of emergency utility contacts.
- Develop an agreement with a tree service company for immediate response after a storm or hurricane.
- Perform an assessment of potential storm damage areas.
- Develop a contract requirement in all tree service contracts that guarantees that all tree service companies accepting contracts with the Township of Dennis will perform emergency services at a pre-arranged rate.

## Objectives 2015-2019

1. Develop an Emergency Cleanup Plan and a Critical Path/ Emergency Route Priority List
  - a. Meet with the Emergency Management Coordinator and review the emergency routes and critical paths through the Township that will need to be cleared to provide utility and emergency services to the residents. Prioritize the routes.
  - b. Perform an assessment of the routes to determine the potential of storm damage along the routes.
  - c. Develop a contract requirement in all tree service contracts that guarantees that all tree service companies accepting contracts with the Township of Dennis will perform emergency services at a pre-arranged rate.
  - d. Establish locations for storing debris for an extended period of time within the Township. Develop a list of emergency utility contacts.
  - e. Develop an agreement with a tree service company for immediate response after a storm or hurricane. Review all information with the Mayor and the Parks Department director.
2. Prepare an updated Emergency Management Plan (Annually)
  - a. Meet with the Emergency Management coordinator to review Emergency Routes, critical paths, supervision, and all other emergency plan priorities.
  - b. Develop a coordinated communication system of reporting and logging storm damage calls and dispatching calls.
  - c. Determine the level and limit of municipal responsibility for storm damage cleanup.
  - d. Reevaluate all of the routes in the Township and determine the potential problems along the routes. Contact utility companies and tree services to update information and communication links.
  - e. Review all information with the Mayor and the Parks Department director.

## Community Stewardship Incentive Program Index

The following is a summary of how and where each of the thirteen CSIP practices is addressed in this Community Forestry Management Plan.

CSIP # 1	Training This CSIP practice is addressed in the Community Overview section on page 12.
CSIP # 2	Ordinance Establishment This CSIP practice is addressed on page 10.
CSIP # 3	Public Education and Awareness This CSTP practice is addressed in the Public Education, Awareness & Outreach section on page 14.
CSIP # 4	Arbor Day Activities This CSIP practice is addressed in the Public Education, Awareness & Outreach section on page 27.
CSIP # 5	Assessment/ Inventory This CSIP practice is addressed in the Tree Inventory Plan section on page 21.
CSIP # 6	Tree Hazard Identification Plan This CSIP practice is addressed in the Tree Hazard Assessment and Risk Management Plan section on page 23.
CSIP # 7	Storm Damage Assessment This CSIP practice is addressed on page 24.
CSIP # 8	Tree Maintenance This CSIP practice is addressed in the Tree Maintenance section on pages 26.
CSTP #9	Insect and Disease Management This CSIP is addressed on page 30.
CSIP #10	Wildfire Protection This CSIP practice is addressed in the Ordinance Establishment section on page 28.
CSIP # 11	Tree Planting This CSIP practice is addressed on page 27.
CSIP # 12	Tree Recycling This CSIP practice is addressed on page 30.
CSIP #13	Sidewalk Management Program...N/A Dennis Township does not have sidewalks.
CSIP #14	Stormwater Management Plan is discussed on page 24.
CSIP #15	Other N/A